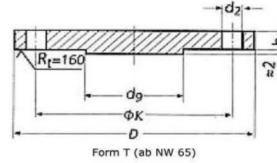
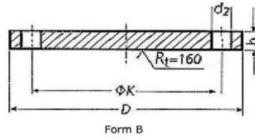
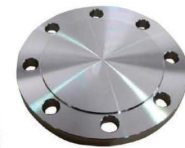


**СЛЕПА ПРИРАБНИЦА PN6
BLIND FLANGE PN6**

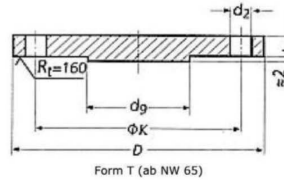
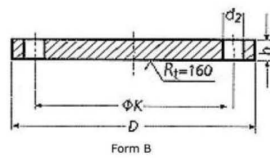


NPS	Flange				Screws			Form B	Form B
	D	b	k	d _{g max.}	Number	Thread	d ₂	kg	kg
10	75	12	50		4	M 10	11	0,38	
15	80	12	55		4	M 10	11	0,44	
20	90	14	65		4	M 10	11	0,65	
25	100	14	75		4	M 10	11	0,82	
32	120	14	90		4	M 12	14	1,17	
40	130	14	100		4	M 12	14	1,39	
50	140	14	110		4	M 12	14	1,62	
65	160	14	130	55	4	M 12	14	2,44	2,48
80	190	16	150	70	4	M 16	18	3,43	3,49
100	210	16	170	90	4	M 16	18	4,76	4,86
125	240	18	200	115	8	M 16	18	6,11	6,28
150	265	18	225	140	8	M 16	18	7,51	7,75
175	295	20	255	165	8	M 16	18	10,4	10,7
200	320	20	280	190	8	M 16	18	12,3	12,7
250	375	22	335	235	12	M 16	18	18,3	19
300	440	22	395	285	12	M 20	22	25,3	26,3
350	490	22	445	330	12	M 20	22	31,6	32,9
400	540	22	495	380	16	M 20	22	38,4	40,2
500	645	24	600	475	20	M 20	22	60,4	63,2



EN 1092-1-05

**СЛЕПА ПРИРАБНИЦА PN10
BLIND FLANGE PN10**



NPS	FLANGE				SWREWS			Form B	Form B
	D	b	k	d _{g max.}	Number	Thread	d ₂	KG	KG
10	90	16	60		4	M 12	14	0,63	
15	95	16	65		4	M 12	14	0,72	
20	105	18	75		4	M 12	14	1,01	
25	115	18	85		4	M 12	14	1,23	
32	140	18	100		4	M 16	18	1,80	
40	150	18	110		4	M 16	18	2,09	
50	165	18	125		4	M 16	18	2,88	
65	185	18	145	55	4	M 16	18	3,66	3,70
80	200	20	160	70	8	M 16	18	4,77	4,83
100	220	20	180	90	8	M 16	18	5,65	5,75
125	250	22	210	115	8	M 16	18	8,42	8,59
150	285	22	240	140	8	M 20	22	10,4	10,6
175	315	24	270	165	8	M 20	22	14	14,3
200	340	24	295	190	8	M 20	22	16,5	16,9
250	395	26	350	235	12	M 20	22	24	24,7
300	445	26	400	285	12	M 20	22	30,9	31,9
350	505	26	460	330	16	M 20	22	40,6	41,9
400	565	26	515	380	16	M 24	26	49,4	51,2
500	670	28	620	475	20	M 24	26	75	77,8